

INTERNATIONAL FESTIVAL OF DISABLED PEOPLE'S ARTS AND CULTURE

GRAND OPENING | Umi to Umi -hohoemu chikara-

障害者の文化芸術国際フェスティバル

グランドオープニング | うみとうみ 湖×海 -ほほえむちから-



活動をされています。
それでは、フレンチさん、よろしくお
願いいたします。
フレンチ/こんにちは。
フレンチです。
リード大学で



February 7 [Fri] – February 9 [Sun], 2025

Biwako Hall, Center for the Performing Arts, Shiga and others

DAY 1: February 7 [Fri]

International Forum | 11:00–17:00 | Venue: Biwako Hall Seminar Room

Workshop | 13:00–17:00 | Venue: Collabo Shiga 21 Seminar Room

DAY 2: February 8 [Sat]

Stage Performance | 13:30–20:30 | Venue: Biwako Hall, Theatre

DAY 3: February 9 [Sun]

The 23rd Music Festival of the Kazuo Itoga Memorial Prize | 14:00–16:30 | Venue: Biwako Hall, Theatre

活動をされています。
それでは、フレンチさん、よろしくお
願いいたします。
フレンチ/こんにちは。
フレンチです。



“The Universal Tourism Project for Arts and Culture for Expo 2025 Osaka, Kansai” is a three-year project that began in 2023. This year, the “International Festival of Disabled People’s Arts and Culture Grand Opening” will be held to further promote universal tourism and the provision of reasonable accommodation, and to expand activities overseas, particularly in the Asian region. This Festival will consist of the International Forum, Performing Arts Show, and the 23rd Music Festival of the Kazuo Itoga Memorial Prize, with guests from Taiwan and Australia.

The 23rd Music Festival of the Kazuo Itoga Memorial Prize

The 23rd Music Festival will be held as part of the Grand Opening of the International Festival of Disabled People’s Arts and Culture, and in addition to performances by workshop groups that have long been engaged in expressive activities in each region, a workshop group was formed to enter in the cultural program for National Sports and Para-Sports to be held in Shiga Prefecture in 2025, to perform the image song of the Games, “Shine!” Through the music festival, we aim to create a rich, symbiotic society in Shiga.

We will support visitors, welcoming everyone.

In order to make the festival enjoyable for everyone, we will provide various services, such as assistance from the station to the venue, and information accessibility for viewing. If you have any problems or concerns, please feel free to contact the secretariat.

We will make reasonable accommodations to ensure that everyone can participate.

Sign language interpretation

writing boards

text support

multilingual support

English,
Chinese [Traditional]

audio guides*

hearing loop*

wheelchair seating

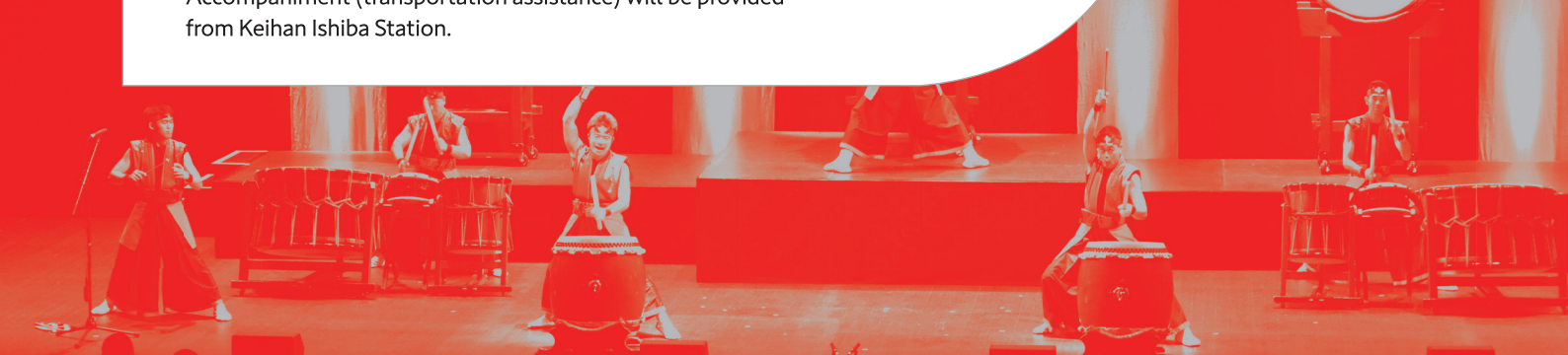
braille programs

*Not available in International Forum. Hearing loop is available only in Biwako Hall Medium Hall.

There is a rest area for those not feeling well.

Accompaniment (transportation assistance) will be provided from Keihan Ishiba Station.

INTERNATIONAL FESTIVAL OF DISABLED PEOPLE'S ARTS AND CULTURE
GRAND OPENING | Umi to Umi - hohoemu chikara -
障害者の文化芸術国際フェスティバル
グランドオープニング
湖×海 — うみとうみ —
ほほえむちから —



DAY 1 | February 7 [Fri]

Doors open 10:30

admission free
*No ticket required

11:00–17:00 International Forum

Venue: Biwako Hall, 3F Seminar Room
Simultaneous interpretation available (English, Chinese [Traditional])

International Festival of Disabled People's Arts and Culture Grand Opening International Forum

Toward the Realization of Universal Tourism in Arts and Culture

Speaker: Chen-Feng Liu (President, Parents' Association for Persons with Intellectual Disability, Taiwan),
Kubo Atsuko (Chairperson, National Network for Promoting Arts and Cultural Activities of Disabled People),
Sasaki Momoko (Chairperson, New Inclusion Japan Association, Inc.)

Chen-Feng Liu



Kubo Atsuko



Sasaki Momoko



Hsiao Ting Lin



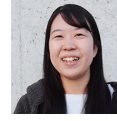
Chia-Chia Chao



Yamabe Mami



Sakajiri Azuki



Keynote Speech: Arts and Culture of Disabled People: A Bird's Eye View of Taiwan and Japan

Speaker: Hsiao Ting Lin (Director, Parents' Association for Persons with Intellectual Disability, Taiwan)

Considering Arts and Culture of Disabled People from the Perspective of Education: Cases from Japan and Taiwan

•The Support System for Students with Mental and Physical Disabilities in Higher Education in Taiwan: The Case of Fu Jen Catholic University

Speaker: Chia-Chia Chao (Head, Health center and Resource Classroom, Office of Student Affairs, Fu Jen Catholic University, Taiwan; Member, "Cultivate Deeply and Fly" Educational Guidance Promotion Team; Executive Secretary, Organization of the Special Education Promotion Committee)

•From the Practice of Arts and Culture Program at Shigaraki Gakuen

Speakers: Yamabe Mami, Sakajiri Azuki (Project Representative, Social Welfare Organization Glow)

•Panel Discussion

Speakers: Hsiao Ting Lin, Chia-Chia Chao, Yamabe Mami, Sakajiri Azuki

Facilitator: Nishikawa Kenji (Representative, Japan Cultural Expo Project for Arts and Culture of Disabled People, New Inclusion Japan Association, Inc; Executive Director, Social Welfare Organization Glow)

Closing Matamura Aoi (Executive Director and Secretary General, New Inclusion Japan Association, Inc.)

*Detailed program schedule will be posted on the website as soon as it is decided.

13:00–17:00 Workshop

Venue: Collabo Shiga 21, 3F Seminar Room

BUS STOP FILMS (Australia) Workshop

Since 2009, BUS STOP FILMS has been working with people with disabilities and others to produce films. Through learning filmmaking, people with disabilities can acquire social skills and work skills, and also aim to raise social awareness. In this workshop, participants will not only participate as actors, but also learn about cinematography, makeup, and costumes, and experience actual camera shooting, lighting, and sound to produce a short film.

Organizer: BUS STOP FILMS

Cooperation: Japan Down Syndrome Society, Nonprofit Minority Exchange Association



Collabo Shiga 21 and Biwako Hall are separate buildings. There is no parking for visitors at Collabo Shiga 21.

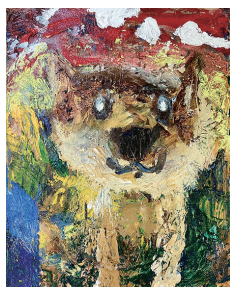
Concurrent Events

Date: February 8 [Sat], February 9 [Sun] Venue: Theatre Foyer

*A ticket for the performance is required to enter the foyer.

The 4th Art Exhibition 2024 Prize-winning Works

Organizer:
National Federation of Parent Associations
for the Physically Disabled



Grand Prize
「Akita Inu da!」 by Fukuhara Tsuyoshi
(Akita Kirari Special Needs Education School,
second year of junior high school)

The 42nd Art Exhibition/ Digital Photography Exhibition for the Physically Disabled (2023) Prize-winning Works

Organizer:
Japanese Society for Disabled Children,
Prefectural Societies for Disabled Children



「Zarigani」 by Maeda Emika
(Kagoshima Prefectural Kagoshima Minami Special Needs Education School,
fifth year of elementary school)

DAY 2

February 8 [Sat] |
Doors open 13:00

Tickets are required for viewing.
Please see the last page how to purchase tickets.

13:30–20:30 Stage Performance

Venue: Biwako Hall, Theatre

Opening [13:30]

Opening Act: Hwei Shih•Ho Shih

National Network Forum for Promoting Arts and Cultural Activities of Disabled People

Comedy Contest “D-1” Grand Prix for People with Down Syndrome [15:00]

For people with Down syndrome who love to laugh and make others laugh with comedy, the “JDS Comedy Lecture 2024” was held at four locations across Japan with Yoshimoto comedians and rakugo educators as lecturers. After the lecture, participants created and performed their own comedies. The “D-1” Grand Prix by the winner of each venue will be held at Biwako Hall.

*The “D” in D-1 was taken from Down syndrome and diversity.

Organizer: Japan Down Syndrome Society

BUS STOP FILMS Presents Film & Talk: Short Film & Cross Talk [15:45]

BUS STOP FILMS will talk about its productions and behind-the-scenes stories, and introduce their films through a simultaneous interpreter-moderator. A slideshow of the previous day’s workshop will be shown. In addition, they will give a talk about their past projects.

Performing Arts Performance by Disabled People [17:30]

The program will be announced on the website as soon as it is decided.

Performers: Starry Prince Band (Taiwan/percussion), Hwei Shih•Ho Shih (Taiwan/harp & flute),
Kuwanoki Kagura Kai [Iwami Fukushima] (Japan/Iwami Kagura), Zuiho Taiko [Nanko Airinkai] (Japan/Japanese drum)



Starry Prince Band (Taiwan)

In 1989, parents in the southern region of Taiwan established the Kaohsiung Autism Association. They formed the Autistic Children’s Music Group with the aim of helping children grow emotionally and behaviorally through music. In 2000, the group was renamed the Starry Prince Band, and it has performed hundreds of concerts. For 35 years, the group has connected children and the world through music, a story filled with courage and faith.



Hwei Shih•Ho Shih (Taiwan)

The elder brother Hwei Shih is a third-year student at the National Hsinchu Special School (third year of senior high school). His younger brother Ho Shih is an eighth grade student (second year of middle school). Although they have communication and comprehension challenges, they not only play a variety of instruments, including harp, piano, flute, xylophone, and jazz drum, but also won first place in the individual category at a national competition and were even awarded the Presidential Education Award. Together with their sister, Hsi Chih Shih, who is also an accomplished musician, they formed the ensemble group, Flights of Fancy: Ornithopter S, and have participated in various charity concerts.



Kuwanoki Kagura Kai [Iwami Fukushima]

Formed in 1985 by the users and staff of Kuwanoki-en to enjoy Iwami Kagura, a local performing art of the Iwami region. The group has been actively engaged in performing both in Japan and abroad. In October 2017, they participated in an international exchange program of arts and culture of disabled people in Nantes, France, and their performance of the popular episode of “Orochi” was a success. In December 2018, they received the Minister of Education, Culture, Sports, Science and Technology Award for lifelong learning support activities for people with disabilities in recognition of the club activities they have continued for many years.



Zuiho Taiko [Nanko Airinkai]

The group was founded in 1987 as a leisure-time club for intellectually disabled people. After years of practicing and performing for fun, club members expressed a desire to become professional, and in 2001, the four-member Zuiho Taiko was formed to fulfill that dream. Today, Zuiho Taiko performs and teaches more than 100 times a year, not only in Japan but also around the world. With the theme of “Hope, Strive, and Live with Gratitude” in mind, the group conveys the importance of having dreams and hopes, and the courage to take on new challenges.

DAY 3 | February 9 [Sun] |

Doors open 13:00

Tickets are required for viewing. Please see the last page how to purchase tickets.

A "Pre-performance Stage Guide" will be held from 13:30. This is a time to touch instruments and other items onstage, and everyone is welcome to participate.

14:00-16:30 The 23rd Music Festival of the Kazuo Itoga Memorial Prize

[Cultural Program Project for Wata-SHIGA Shining National Sports and Para-Sports]

Venue: Biwako Hall, Theatre

Performers: Konan Workshop Group, Omi Gakuen Workshop Group, Otsu Workshop Group, Shine!! Workshop Group, Starry Prince Band (finale only), Huei Shih·Ho Shih (finale only)



Konan Workshop Group

Navigator: Kitamura Shigemi

A group of performers, including disabled people living in the Konan area, staff from welfare facilities, and professional artists, who create, perform, and dance together. The group believes in creating a dynamic stage in which, rather than forcing or correcting their movements through dance, each person's behaviors are affirmed as dance, resonating and coexisting with each other.



Otsu Workshop Group

Navigator: Shimizu Miki

The members gather for Otsu Workshop. "What instrument shall I start with today?" As they casually pick up instruments, there comes a sound or two. Rhythms, sounds, and voices overlap, and before you know it, an impromptu melody is being played! We hope you will join us and enjoy our members' unique and lively performance through the music they love.



Omi Gakuen Workshop Group

Navigator: Nakaji Tomoe

This is a workshop group of children from Omi Gakuen. Their activities are centered on percussion ensembles and singing. Although the workshop members change every year, the group has developed by adding new ideas each year to those that have been born and passed down in the history of the music festival.



Shine!! Workshop Group

Navigator: yokko, Arrangement and composition: Tanikawa Kensaku

This workshop group was formed to promote the National Sports and Para-Sports to be held in Shiga in the fall of 2025. They will perform their image song, "Shine!!" with an original arrangement for the music festival.

Participating groups: Aoi Tori Kai Hikone Gakuen, Konan Workshop Group, Skip Heart, Sign Language Circle Suzuran, Theater Company Machipro Ichiza, Wadaiko Tontoko

《Producer》Komuro Hitoshi (folk singer)

Sakata Akira (alto saxophone), Takara Kumiko (percussion), Tanikawa Kensaku (piano), Yoshida Ryuichi (baritone saxophone), Komuro Yui (voice)



Komuro Hitoshi



Sakata Akira



Takara Kumiko



Tanikawa Kensaku



Yoshida Ryuichi



Komuro Yui

Komuro Hitoshi and the Guest Musicians

Komuro Hitoshi has been the general producer since the 11th Music Festival of the Kazuo Itoga Memorial Prize in 2012, and guest musicians have gathered in response to Komuro's call to support the festival as tricksters. The festival becomes a festival of joy when the musicians join the workshop members.

What is the Music Festival of the Kazuo Itoga Memorial Prize?

The Kazuo Itoga Memorial Prize and the Kazuo Itoga Memorial Future Prize are awarded to individuals and organizations that have inherited the ideas and spirit of Itoga Kazuo, who devoted himself to the development of welfare for disabled people, and have made remarkable contributions in efforts involving disabled people and others experiencing difficulties in life. This music festival has been held since 2002 to celebrate the winners of these awards.



**Tickets go on sale
December 25 [Wed]!**

All seats unreserved

Tickets are required to see the show on
February 8 [Sat] and 9 [Sun]. February 7 [Fri] is free entry.

One-day ticket Adult 1,000yen Disabled visitor 500yen

*Only one-day tickets are available. If you wish to enter both days, please purchase a ticket for each day.

*Free admission for one accompanying person of a disabled visitor, junior high school student and under. (On February 8 and 9, tickets are required for free admission.)

*Reservations are recommended.

How to Purchase or Reserve Tickets

Admission will be easier if you purchase tickets or make reservations in advance. A: We accept reservations by phone, e-mail, or online form. Please provide [your name, number of people, telephone number, and any necessary accommodations]. B: Tickets are only sold at the counter in cash.

No changes or cancellations will be accepted for tickets purchased or reserved. No refunds will be made except in case of cancellation or postponement.

〈A: Purchase and Reserve〉

Secretariat: Social Welfare Organization Glow, Planning Bureau, Department of Community Coexistence
4837-2 Shimotoira, Azuchi-cho, Omihachiman-shi, Shiga

TEL: **0748-46-8100** (weekdays 9:00-17:45)

E-mail: **kikaku@glow.or.jp**

Application Form: <https://forms.gle/dVXGb5AfssiiFMUD8>



〈B: Purchase〉

Biwako Hall Ticket Center
15-1 Uchidehama, Otsu-shi, Shiga

Closed Tuesdays
(or the following day if Tuesday is a holiday)

TEL: **077-523-7136**

Hours: 10:00~19:00

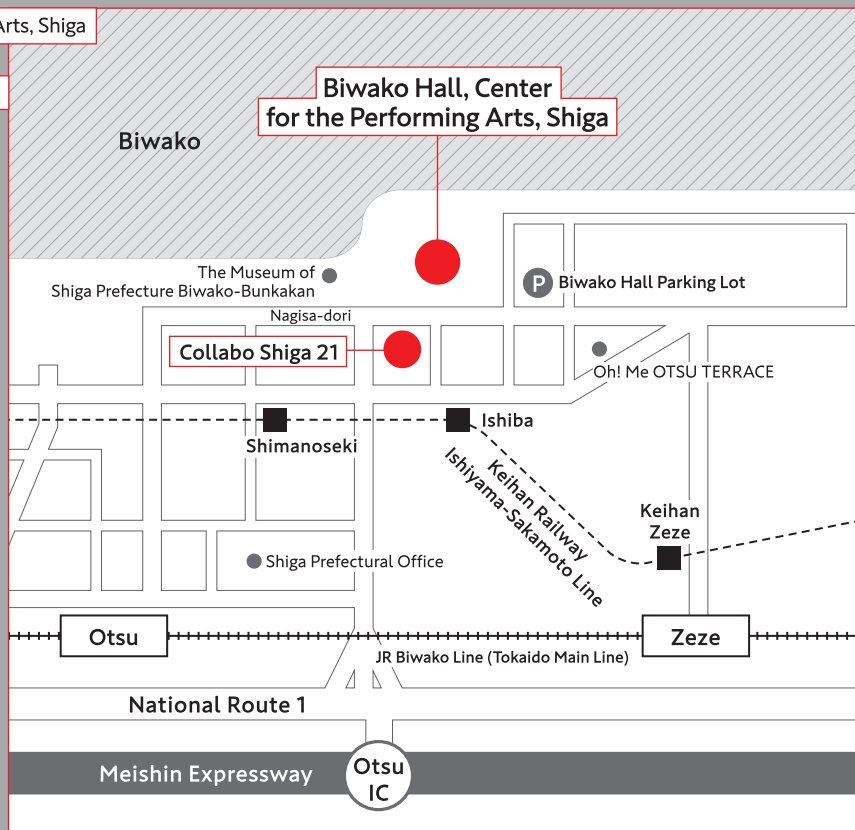
◎Same-day tickets will be sold at the entrance of Biwako Hall, Theatre.
(Admission may be denied if advance sales reach maximum capacity.)

Access Biwako Hall, Center for the Performing Arts, Shiga
15-1 Uchidehama, Otsu-shi, Shiga

◎From JR Biwako Line (Tokaido Main Line) Otsu Station,
10 minutes by temporary bus, 20 minutes on foot.
A temporary bus will be available from Otsu Station. Please see
the website for detailed information on schedules.

◎From JR Biwako Line (Tokaido Main Line) Zeze
Station, about 15 minutes on foot.

◎From Keihan Zeze Station, board a train bound for
Sakamoto Hieizanguchi, disembark at Ishiba Station,
3 minutes on foot.
There will be transportation assistance from Keihan
Ishiba Station.



The Japan Cultural Expo serves as an information hub for foreign visitors to experience "The Beauty and The Spirit of Japan". Find information on the project at <https://japanculturalexpo.bunka.go.jp/en/>

This project is implemented as part of the FY 2024 Japan Cultural Expo 2.0 Project in collaboration with the Japan Association of/for People with Intellectual Disabilities, Governors Association for Promoting Arts and Cultural Activities of Disabled People and local authorities. This project aims to realize "universal tourism in culture and the arts" that enables anyone, including people with disabilities in Japan and abroad, to access culture and the arts anytime, anywhere. And when the Osaka Kansai Expo is held in 2025, we hope that people with disabilities from Japan and abroad will use the Expo as a gateway to visit other parts of Japan.

More information about the performances and the times of the temporary bus service will be posted on the following two websites.

Co-Creation with All Peoples
<https://artbrut-creation-nippon.jp/2022project/>



The Music Festival of the Kazuo Itoga Memorial Prize Website
<http://stage.art-brut.jp/>



International Festival of Disabled People's Arts and Culture Grand Opening

The Universal Tourism Project for Arts and Culture for Expo 2025 Osaka, Kansai International Festival of Disabled People's Arts and Culture Grand Opening [FY 2024 Japan Cultural Expo 2.0]

Organizers: New Inclusion Japan Association, Inc., Japan Arts Council, Agency for Cultural Affairs

Co-organizer: Biwako Hall, Center for the Performing Arts, Shiga

Cooperation: National Network for Promoting Arts and Cultural Activities of Disabled People

[Constituent Organizations] Japan Physical Disabilities Organization Alliance, Japan Federation of the Blind, Japanese Federation of the Deaf, National Federation of Parent Associations for the Physically Disabled, Nationwide Association for Children (Persons) with Severe Physical and Intellectual Disabilities, Japanese Society for Disabled Children, The National Federation of Associations of Families with The Mental Illness in Japan, Japan National Assembly of Disabled Peoples' International (DPI-Japan), Autism Society Japan, Japan Down Syndrome Society, Japan Deafblind Association, National Association for Living Support of Children and Adults with Intellectual Disabilities, National Council of Facilities for Physically Disabled People, Barrier Free Film Research Society, National Network for Community Living Support, Genesis of Entertainment, Japan Council on Independent Living Centers, National Network for Community Living, [Secretariat] JNew Inclusion Japan Association, Inc.

Collaboration: Governors Association for Promoting Arts and Cultural Activities of Disabled People

Endorsement: Shiga Prefecture, Shiga Prefectural Board of Education, Otsu City, Otsu City Board of Education

The 23rd Music Festival of the Kazuo Itoga Memorial Prize

Organizer: Executive Committee of the 23rd Music Festival of the Kazuo Itoga Memorial Prize, Social Welfare Organization Glow

Executive Committee: Shiga Music Promotion Society, Shiga Prefecture Choral Association, Kazuo Itoga Memorial Foundation, Shiga Prefecture Council of Child and Adult Welfare Facilities, Shiga Association of/for People with Intellectual Disabilities, Biwako Arts Foundation, Shiga Prefecture Council of Social Welfare, Shiga Prefecture Welfare Association for the Disabled, Shiga Prefecture Welfare Division for Persons with Disabilities, Shiga Prefecture Division for the Promotion of Arts and Culture